



Land Now Selling from \$149,900



Home & Land from **\$376,300**

Rossmore 4E

Lot 193, Hollanders Crescent, Kelso

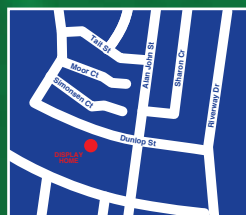
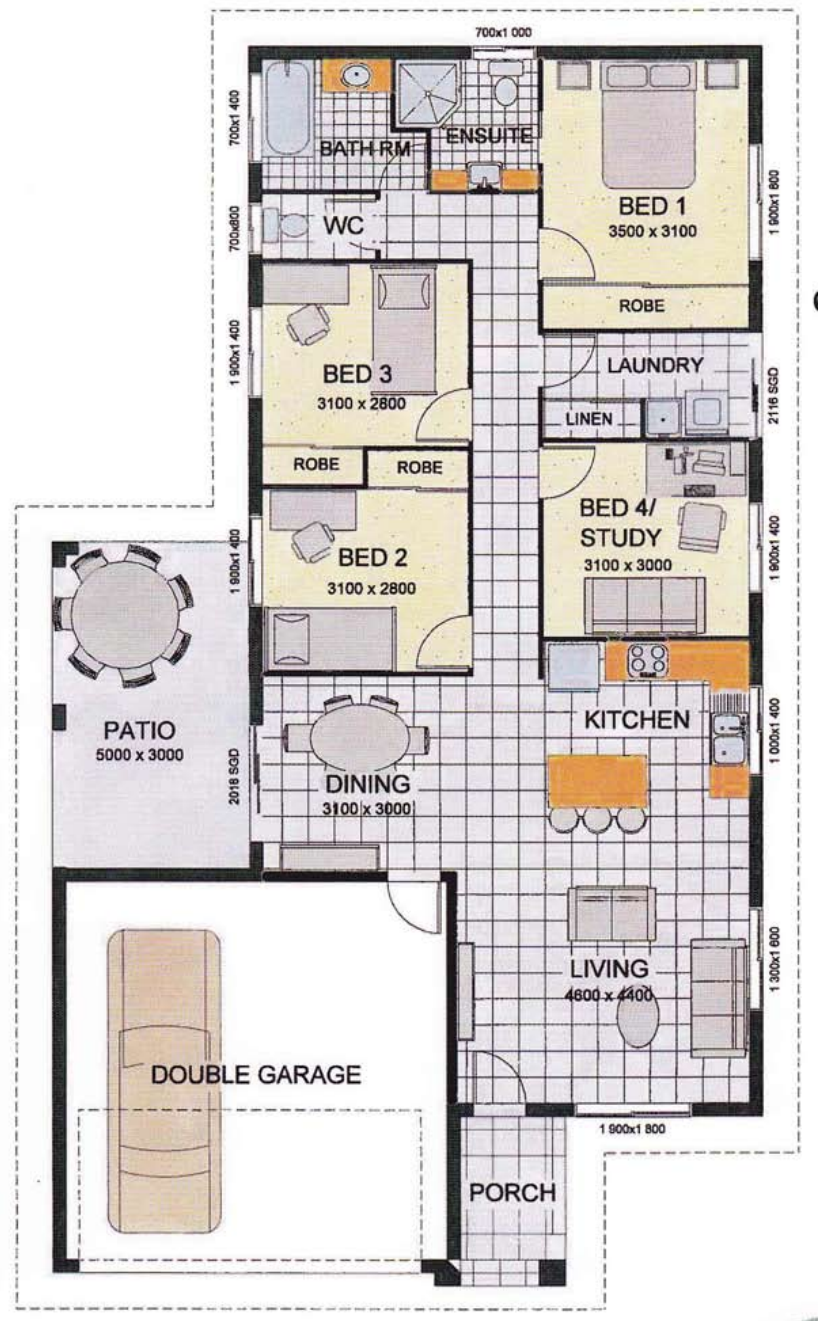


Located in a breezy community just minutes from the Townsville CBD, this 4 bedroom home is sophisticated and stylish, yet family friendly. With open plan living, dining and kitchen plus the outdoor alfresco area, this home has all the necessities, not to mention all the luxuries, that together make this the perfect family home.

LUXURY INCLUSIONS*

- Solar Hot Water System
- 1.5 kw Solar Panels Back to Grid
- Clothesline & Letterbox
- Air Conditioning
- Carpet & Tiles Throughout
- Security Screens
- Fence, Gates & Turf
- Automatic Panel Lift Garage Door
- Fans to Bedrooms & Living Areas

For more information, contact **Value Homes Errol Wolff** on 0409 967 817 or **Jackie Hietamaki** on 0412 410 046



Dunlop Street, Riverparks
And other locations all across QLD
Land Sales 13 13 63
www.riverparksestate.com.au

Another quality development by
Devine
Communities
Places you'll love to call home

*May vary and subject to contract terms. Rendered image for illustration purposes only. Photographs and images are indicative only and subject to change without notice. For a copy of the Sustainability Declaration relating to this property please contact Value Homes QBSA No. 1130049 on 07 4755 2777.